



PIOLAX
Endoscopy



Revo Wave

Endoscopic Guidewire

Stiff & Smooth Performance

EVERLASTING WAVE OF REVOLUTION <REVO WAVE>

The revolutionary wave patterns lead to excellent lubricity of the guidewire.

3 key factors: **safeness**, **smoothness** and **stiffness** are well-balanced into this endoscopic guidewire.

It fulfills well of the demands of new medical devices, new procedures and expanded indications regarding endoscopic treatments.

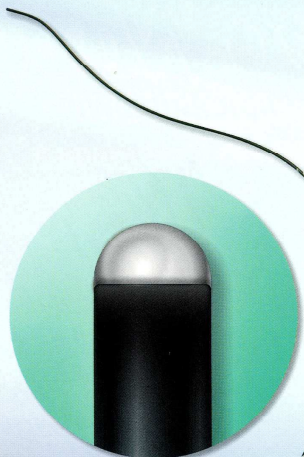


Figure of Tip Structure

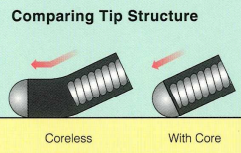
Safe

ATRAUMATIC TIP

Spherical tip has less harm on tissues of ducts.

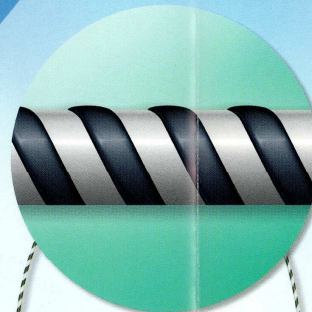
CORELESS TIP

Coreless processing on the tip reduces friction on tissues of ducts during insertion.



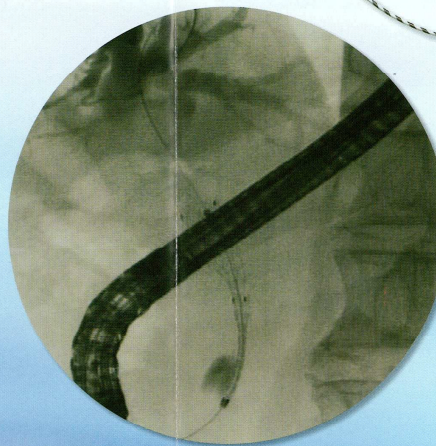
HYDROPHILIC-COATED TIP

The Urethane resin tip is hydrophilic-coated which reduces friction on tissues that leads to higher performance and improvement in transmission through strictures.



VISIBILITY UNDER THE ENDSCOPE

Vivid movements of the guidewire can be confirmed from the fine stripes.

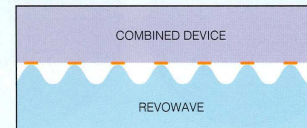


Smooth

A SURFACE STRUCTURE OF A SPECIAL WAVE

The smaller area of contact with the inner wall of combined devices leads to smooth manipulation and device exchanges with RevoWave.

Surface structure of RevoWave *Applying for a patent



The surface structure decreases the area of contact with the inner wall of the combined device.

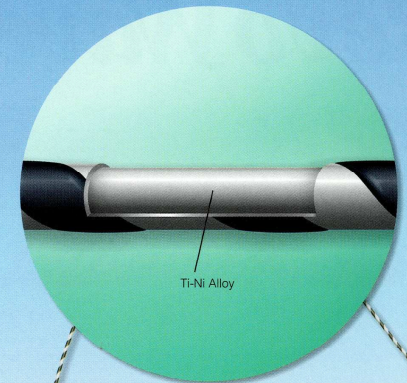


Figure of The Inner Structure

Stiff

SUPPORTING ABILITY

Device supporting ability is improved by its specially processed corewire.

TORQUE TRANSMISSION ABILITY

Improved torque transmission by specially processed corewire supports difficult procedures such as passages through severe strictures and selection from bifurcated branches.

VARIATIONS OF SHAFT DIAMETER, TIP SHAPE AND SHAFT STIFFNESS

SHAFT TYPE 0.025 and 0.035

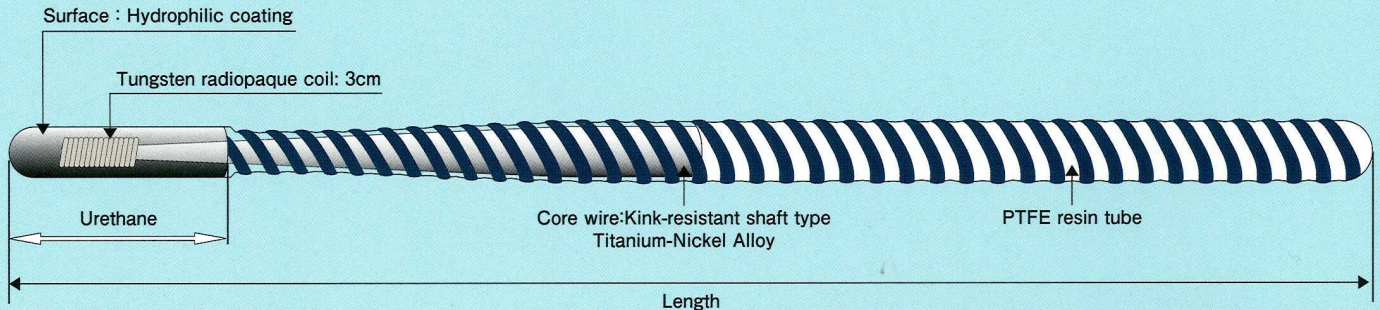
TIP SHAPE Angle / Straight

SHAFT STIFFNESS Standard and Hard
* Both available only for 0.035 types

Revo Wave
Endoscopic Guidewire

Revo Wave *Stiff and Smooth* — Endoscopic Guidewire — *Performance*

STRUCTURE OF REVOWAVE

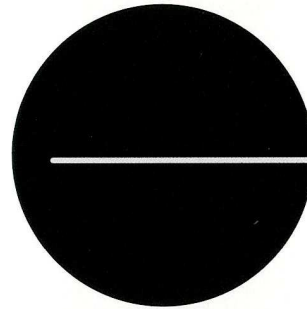


Visibility under the endoscope

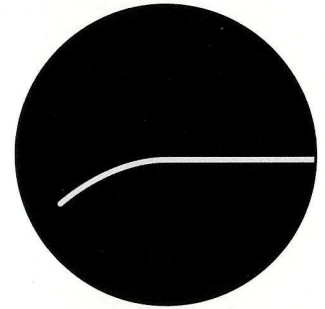


Vivid movements of the guidewire can be confirmed from the fine stripes.

Shape of Tip



Straight



Angle

PRODUCTS

Catalog Number	Shaft Type	Length	Shaft Stiffness	Hydrophilic Coating Length	Shape of Tip
EWSA-3545 I	0.035	450cm	Standard	7cm	Angle
EWSS-3545 I	0.035	450cm	Standard	7cm	Straight
EWHA-3545 I	0.035	450cm	Hard	7cm	Angle
EWHS-3545 I	0.035	450cm	Hard	7cm	Straight
EWHA-2545 I	0.025	450cm	Hard	5cm	Angle
EWHS-2545 I	0.025	450cm	Hard	5cm	Straight

Please ask below for further inquiries :

CE 0120



ELLA-CS, s.r.o.
 Milady Horakove 504, 500 06 Hradec Kralove 6,
 Czech Republic
 T e l : +420-495-279-111
 Mail: info@ellacs.eu



PIOLAX MEDICAL DEVICES, INC.
 179 Kariba-cho, Hodogaya-ku, Yokohama-shi
 Kanagawa 2400025 Japan
 T e l : +81-45-710-1570
 Mail: pmdinfo@piolax.co.jp